

Diagnostic Criteria Handbook in Histopathology

Paul J. Tadrous

Errata Document: Last revised 01.09.2008

Headings and sub-headings are shown to help guide you to the part of the text that requires correction.

Text in yellow highlight give instructions as to the nature of corrections

Red text boxes give the page and line location and type of error(s)

A 'REPLACEMENT' error may encompass several errors on one line e.g. a spelling mistake plus an extra space or bracket that needs removing. Please read these replacement errors carefully.

All the corrections found in this document have been made in the first reprint of the 1st edition of the book, so anyone with a later reprint or edition can ignore them.

Prelims

Most of the prelims pages have not numbered. They should be numbered with lower case Roman numerals.

Abbreviations and Symbols

(Replace this)

isochromosome..e.g.

(with this)

isochromosome ..., e.g.

First page of 'Abbreviations and Symbols' 7th line from the bottom of the left hand column

Chapter 2: Histological Techniques

Staining (Practice)

Diagnostic Immunohistochemistry

TTF-1 (nuclear staining)

(Replace this)

[incl. postatic ductal]

(with this)

[incl. prostatic ductal]

p.16: SPELLING ERROR - insertion of letter 'r' at 4th line from bottom of this page

Chapter 3: Laboratory Management

Aspects of Budgetary Control

(Replace this)

etc.]

(with this)

etc.

p.28: REMOVAL of square bracket at end of 7th line from top of page

Chapter 4: Cut-Up and Reporting Guidelines

Applied Anatomy

Neck

p.37: SUBSTITUTION of 1st line in this text box (note multiple errors)

Figure 4.3

(In text box "Structures Included in a Radical Neck dissection", replace this)

- A. LN from levels I–IV (at least)

(with this)

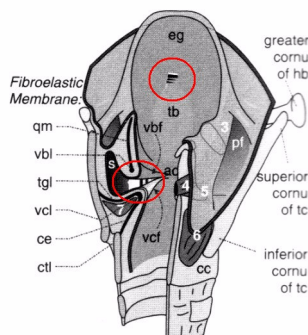
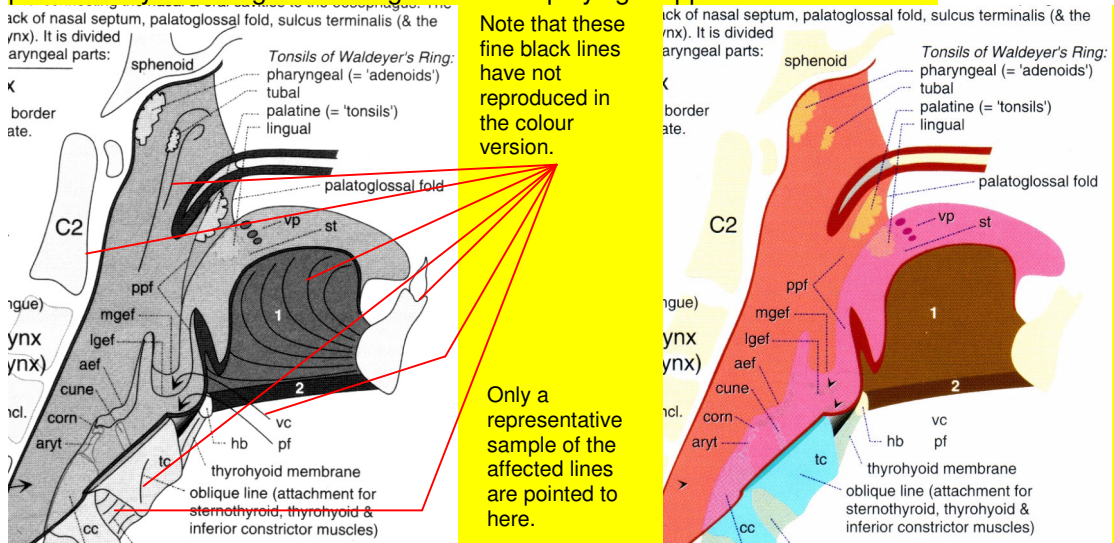
- A. LN from levels I–V

(ensure this change is made in both the greyscale and colour plate versions of the figure)

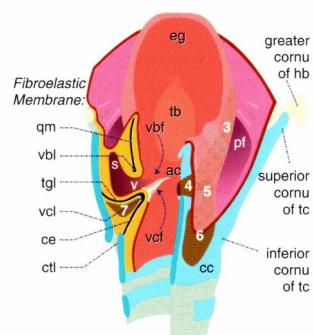
p.38 and Colour Plates Section: FIGURE LINES AND SHADING ERRORS

Figure 4.4

There is a problem in the reproduction of fine black lines in the colour version of this figure (in the colour plates) and a problem with the reproduction of some shaded transitions in the greyscale version of this figure (on page 38). I have prepared some illustrations of these problems by scanning in these figures and displaying cropped versions below.



These two pictures illustrate the colour shading problem (see red ellipses which I have inserted to highlight the affected areas). This problem only affects the greyscale figure, not the colour one)



Colour Plate Figure 14.1

A similar problem with fine black lines being too faint is seen in the colour plate version of figure 14.1. Compare this to the greyscale version on page 193 to see what the lines should look like.

Colour Plate Figure 17.1

A similar problem with fine black lines being too faint is seen in the colour plate version of figure 17.1. Compare this to the greyscale version on page 245 to see what the lines should look like.

Specimen Handling and Reporting guidelines*Head and Neck (SCC and Other Types of Carcinoma)***Main resection (general)**

p.44: SUBSTITUTION of 2nd main bullet in this section

(Replace this)

- Measure (mm) max. depth and \emptyset of tumour. Tumour depth is measured from the luminal surface (extrapolated to the level of the surrounding, uninvolved, surface if there is ulceration).

(with this)

- Measure (mm) max. depth and \emptyset of tumour. Tumour depth is measured from the level of surface of the surrounding, uninvolved, mucosa (extrapolated/interpolated if there is ulceration/fungation).

*Oesophageal Tumours (incl. Siewert & Stein Type 1 AdenoCA)***Resections micro**

p.45: SUBSTITUTION of 3rd main bullet in this section

(Replace this)

- Serosal surface involvement (*NB*: only the gastric part will have a serosa)

(with this)

- Serosal surface involvement (distinguish pleura from gastric serosa)

(Replace this)

p.45: SUBSTITUTION of this B-level heading

Gastric Carcinoma (incl. Siewert & Stein Types 2 & 3 AdenoCA)

(with this)

Gastric Carcinoma (incl. Siewert & Stein Type 3 AdenoCA and some Type 2)

Chapter 8: Respiratory and Mediastinum

Interstitial Lung Disease

Desquamative Interstitial Pneumonia (DIP)

(Replace this)

(‘smokers MΦ’)

(with this)

(‘smoker’s MΦ’)

p.84: INSERTION of an apostrophe at the end of the of 1st sub-bullet of the last main bullet in this section

Pulmonary Hypertension

Figure 8.2

(Replace this)

medical hypertrophy

(with this)

medial hypertrophy

p.88: REMOVAL of letter ‘c’ in the legend of figure 8.2

Other Tumours

(Replace this)

(See also Chapter 21: Soft Tissues)

(with this)

(See also p.321)

p.95: ALTERATION of B-level heading at top of this page

Chapter 10: Lymphoreticular

B-Cell Lymphomas

Follicular Lymphoma (FCL)

(Replace this)

1. 0–5 / 10 hpf
2. 6–15 / 10 hpf
3. >15 / 10 hpf

(with this)

1. 0–5 / 1 hpf
2. 6–15 / 1 hpf
3. >15 / 1 hpf

p.111: DELETION of extra zeros in the 1st 3 sub-bullets of the 9th main bullet in this section (Grading FCL uses the centroblast count per one hpf not per 10 hpf)

T-Cell/NK Lymphomas and Reactions

Anaplastic Large Cell Lymphoma ...

(Replace this)

ALK–vity

(with this)

ALK –vity

p.116: INSERTION of a space in the 1st sub-bullet of the 9th main bullet in this section

The Spleen

Hairy Cell Leukaemia (HCL)

(Replace this)

1-2Kg

(with this)

1–2 Kg

p.123: SUBSTITUTION at the end of the 1st main bullet in this section (note multiple errors)

Chapter 11: Alimentary Tract

Salivary Glands

Pleomorphic Salivary Adenoma (PSAd)

(Replace this)

Chondromyxoid stroma

(with this)

Chondromyxoid stroma (± adipose / bone)

p.130: ADDITION to 1st line in this section

Oesophagus

Glandular Dysplasia

(Replace this)

- Management: ➤ *Indefinite* early → (3 month) re-endoscopy after Rx

(with this)

- Management: ➤ *Indefinite* → early (3 month) re-endoscopy after Rx

p.136: SUBSTITUTION of 1st sub-bullet in the last main bullet in this section

Chapter 12: Liver, Biliary Tract and Pancreas

(Replace this)

Acute Hepatitis with Bridging Necrosis

(with this)

Acute Hepatitis with Bridging Necrosis

p.158: CHANGE OF HEADING LEVEL for these two headings (demote A-level headings to B-level)

(Replace this)

Acute Hepatitis with Pan-Acinar/Pan-Lobular/Massive/Sub-massive Necrosis

(with this)

Acute Hepatitis with Pan-Acinar/Pan-Lobular/Massive/Sub-massive Necrosis

Gallbladder

Polyps

(Replace this)

biliary epithelium ↑ apical mucin

(with this)

biliary epithelium with ↑ apical mucin

p.174: INSERTION of word 'with' in the 4th main bullet in this section

(Replace this)

Solid / Cystic Solid and Papillary

(with this)

Solid / Cystic, Solid and Papillary

p.177: INSERTION of a comma in this heading

Chapter 16: Urological

Prostatic Carcinoma and its Mimics

Prostatic Intraepithelial Neoplasia (PIN)

(Replace this)

- Grade 1: ↑ nuclear size and anisonucleosis are the main features}
- Grade 2: hyperchromasia, chromatin margination, ↑ nucleolar size}
- Grade 3: many large nucleoli, nuclear crowding, less anisonucleosis}

(with this)

- Grade 1: ↑ nuclear size and anisonucleosis are the main features } = Low grade
- Grade 2: hyperchromasia, chromatin margination, ↑ nucleolar size } = High grade
- Grade 3: many large nucleoli, nuclear crowding, less anisonucleosis } = High grade

p.221: TYPESETTING ERROR in the 6th, 7th and 8th main bullets in this section (change in position of curly braces)

Testicular Tumours

Germ Cell Tumours

Immunocytochemistry and tumour markers

(Replace this)

- CAM5.2: MTU, YST but not seminoma

(with this)

- CK: MTU (CAM5.2), YST but not seminoma

p.224: SUBSTITUTION at the beginning of the 7th main bullet in this section

Yolk sac tumour (YST) / yolk sac elements

(Replace this)

+ve for CK, AFP

(with this)

+ve for CK (AE1/3 or MNF116), AFP

p.226: SUBSTITUTION in the 9th main bullet in this section which begins 'Immuno'

Chapter 17: Gynaecological

Cervix Uteri

FIGO Staging of Cervical Carcinoma ...

(Replace this)

≤7mm ∅

(with this)

≤7mm ∅

p.233: SYMBOL CHANGE at the end of the 4th sub-bullet of the first main bullet (slashed letter 'o' replaced by diameter symbol)

Corpus Uteri

Endometrial/Uterine Metaplasias

Eosinophilic/Oncocytic

(Replace this)

adenoca

(with this)

adenoCA

p.240: FONT CHANGE to small caps for the letters 'ca' in the 2nd main bullet in this section

Uterine Smooth Muscle Tumours

Malignant (uterine leiomyosarcoma)

(Replace this)

- Requires all 3 of the following:

(with this)

- Malignancy can be confidently diagnosed if all 3 of the following are present:

p.241: SUBSTITUTION of 1st main bullet in this section

Ovaries

Serous Tumours

Borderline ('atypical proliferative')

(Replace this)

endosalpingosis

(with this)

endosalpingiosis

p.244: SPELLING ERROR in the 3rd sub-bullet of the 3rd main bullet in this section

Chapter 19: Endocrine

Thyroid

Papillary Carcinoma (PTC)

(Replace this)

LP 34

(with this)

LP34

p.270: DELETION of a space in the last line of the 4th main bullet on this page

Chapter 20: Skin

Epidermal Lesions (Squamous and Basal Cell)

Basal Cell Carcinoma (BCC)

(Replace this)

CK15

(with this)

CK15, Ber-EP4 is at least focally +ve (*cf.* -ve in pure SCC)

p.284: ADDITION to the end of the 4th main bullet in this section

Adnexal Tumours

Sebaceous Lesions ...

(Replace this)

cf.

(with this)

cf.

p.294: FONT CHANGE within the 2nd main bullet in this section

Chapter 22: Osteoarticular

Bone Tumours and Tumour-like Lesions

Fibrous Dysplasia (FD)

(Embolden the first letter 'p' in 'pigmentation' - only the first letter, not the whole word)

p.334: FONT CHANGE within the 2nd main bullet in this section

Chapter 24: Cytopathology

Salivary Glands

Mucoepidermoid Carcinoma (MEC)

(Move the text beginning 'can't tell if ...' from being in line with the 5th bullet to being mid-way between the 4th and 5th bullets such that it is on the same level as the point of the curly brace). The effect is illustrated below – change this:

p.368: TYPESETTING ERROR in regards to the text **after** the curly brace on the 4th and 5th main bullets of this section

Mucoepidermoid Carcinoma (MEC)

- 'Dirty' background with mucin
 - 'Goblet' cells/mucin vacuoles in cytoplasm
 - Intermediate cells: smaller, dark oval nucleus ± vacuoles
 - Squames
 - Malignant squames
- } low grade
} high grade
} can't tell if 1°/2° SCC or high grade MEC

into this:

Mucoepidermoid Carcinoma (MEC)

- 'Dirty' background with mucin
 - 'Goblet' cells/mucin vacuoles in cytoplasm
 - Intermediate cells: smaller, dark oval nucleus ± vacuoles
 - Squames
 - Malignant squames
- } low grade
} high grade
} can't tell if 1°/2° SCC or high grade MEC

Ovarian Cyst Fluid

Benign Cysts and Granulosa Cell Tumour

(Replace this)

leuteal

(with this)

luteal

p.374: SPELLING ERROR within the 3rd sub-bullet of the 4th main bullet in this section

Index of General Terms

(Replace this)

granuloma (continued)
icolitis 143–5, 147, 148

(with this)

granuloma (continued)
in colitis 143–5, 147, 148

p.404: SUBSTITUTION - multiple errors

(Replace this)

histiocytoïd haemangioma 318

(with this)

histiocytoïd haemangioma 318

(should be placed just after '**histiocytic** infiltrates')

p.404: SUBSTITUTION and CHANGE OF POSITION

Index of Molecules

(This entry)

cortisol 275

(should be placed just after '**Copper**')

p.417: CHANGE OF POSITION